

Welcome to Karolinska

Pierre Holman

Area Business Manager,
Public Sector
YIT Sweden

YIT Capital Markets Day
September 2, 2010
Stockholm



Contents

- General information about public sector in Sweden
- Information and facts about Karolinska University Hospital
- Pneumatic pipe system



Public sector



Municipalities

- Schools
- Senior apartments
- Sport facilities and arenas



County Council

- University hospitals
- Local hospitals
- Emergency hospitals
- Health center
- Universities

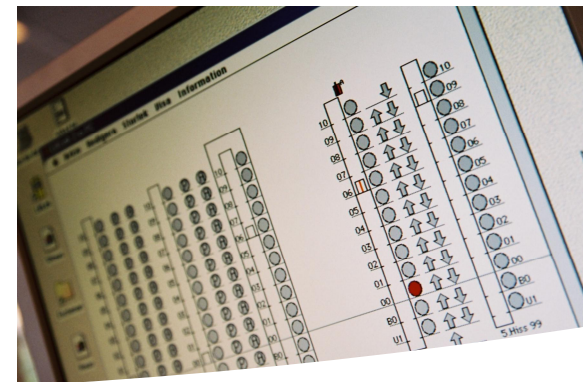


Companies

- Airports
- Roads and tunnels
- Railways
- Swedish army
- Museum

Medical facts about Karolinska

- The hospital has 800 beds
- Almost 60,000 health care occasion is being produced every year, of which 3,000 is people from other countries or parts of Sweden.
- Karolinska produces over 800,000 visits, of which 20,000 is people from other countries or parts of Sweden
- About 8,000 employees



Technical facts about Karolinska

- The hospital area covers 401,000 m²
- Electricity use: 52,300 MWh per year
- Water: 403,000 M³ per year
- Heating: 52,000 MWh per year
- ~19,000 -20,000 work orders per year



Pneumatic pipe system at Karolinska

YIT collaborates with
Hanter It, Scandinavia's leading
producer of pneumatic tube systems



Together we can do it. **YIT**

Facts

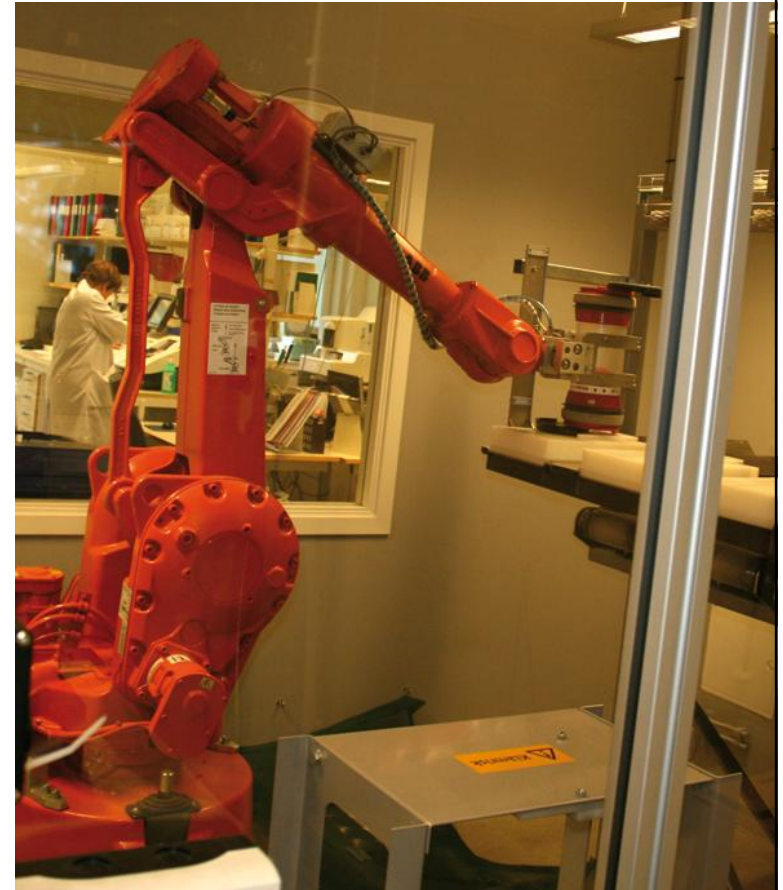
- This pneumatic tube system at Karolinska Hospital was installed in 2006
- It handles daily:
 - medical tests
 - cytostatic
 - blood
 - medicine
 - money (future)
 - drugs etc

Some of the goods are protected,
which require competence



Facts

- 104 standard stations
- 3 central transfer units
- 1 automatic robot-cell - capacity 180 carrier/h
- 9 km Ø160mm pipes installed
- 600 carriers with transponders in the system
- 2000-2500 transports each day
- 1575 km of transports each day



Scope of supply - YIT's role

YIT ensures operation 24/7

By:

- Monitoring
- Alarms
- Planned maintenance of the system since 2003
- Operation center 24/7
- Fault report possible 24/7
- Telephone-support 24/7, trained technicians
- Repair possible 24/7,
most common spare parts in stock



Together we can do it. **YIT**

Profits

- Transformational profits
 - Daily- & emergency samples, blood transportations, drugs & other small-goods transports (earlier carried out by transportation service and care staff)
- Nursing profits
 - Higher attendance at the care-units, faster reply to the samples – faster diagnoses/care
- Security
 - Different security classes on different goods
 - Complete overview/track of all transports
- Ergonomics
 - Work load – more even flow of transports, prioritization of emergency transports
 - Different type of stations to meet different kind of needs
- Flexibility
 - Easy to adjust the system to the changing needs of the hospital
 - All stations is connected to each other via central transfer units





Together we can do it.